



2  $\mu$ m  
┌  
└

Mag = 3.50 K X

EHT = 5.00 kV

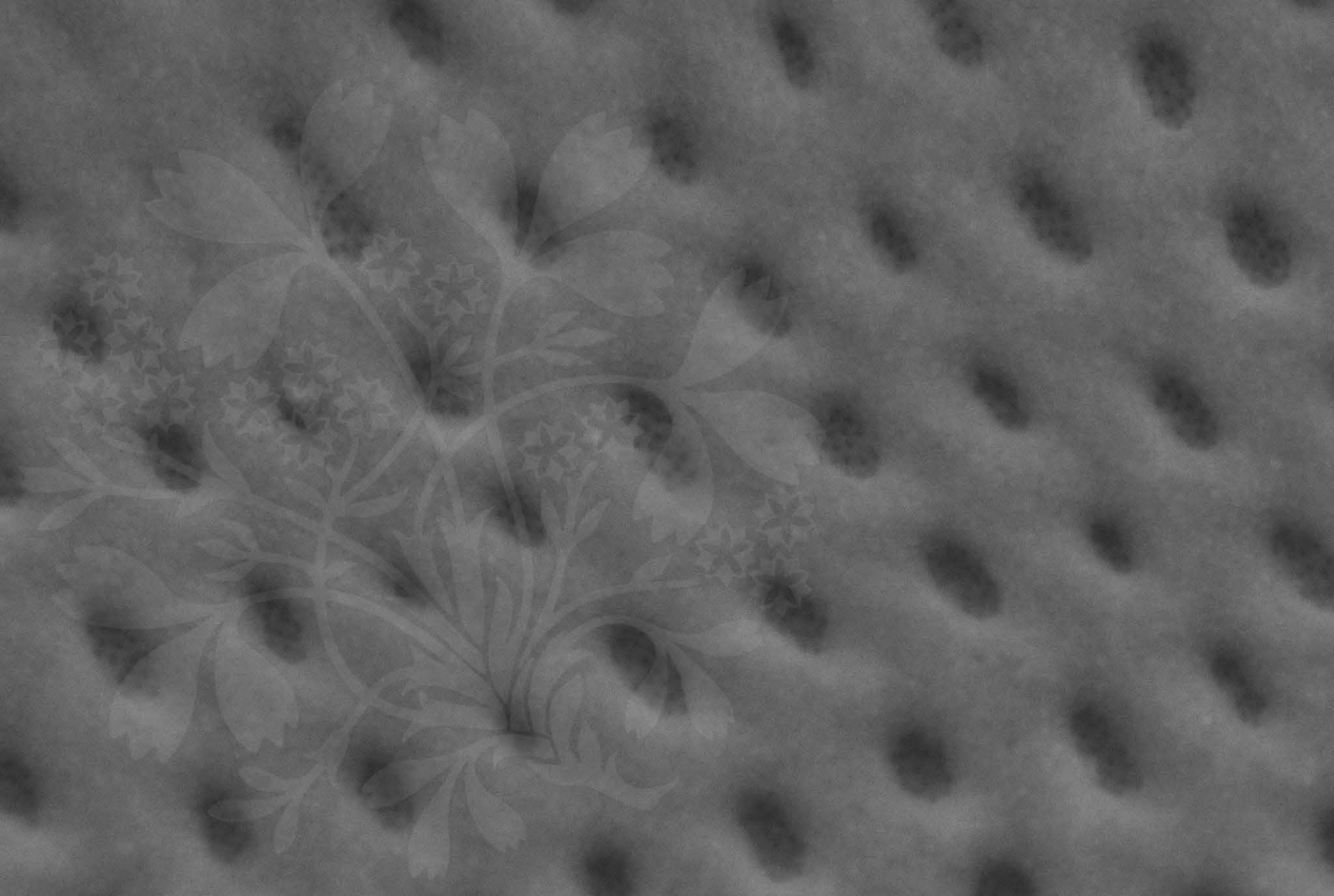
Signal A = SE2 Date :23 Jun 2015

WD = 4.7 mm

File Name = R20\_01.tif







100 nm



Mag = 200.00 K X

EHT = 5.00 kV

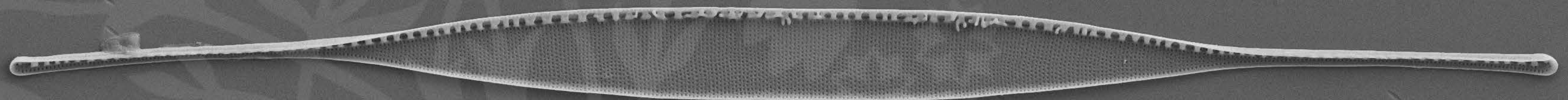
Signal A = SE2 Date :23 Jun 2015

WD = 4.7 mm

File Name = R20\_02.tif







2  $\mu$ m  
┌  
└

Mag = 3.50 K X

EHT = 5.00 kV

Signal A = SE2 Date :23 Jun 2015

WD = 4.7 mm

File Name = R20\_03.tif







2  $\mu$ m  
┌  
└

Mag = 3.50 K X

EHT = 5.00 kV

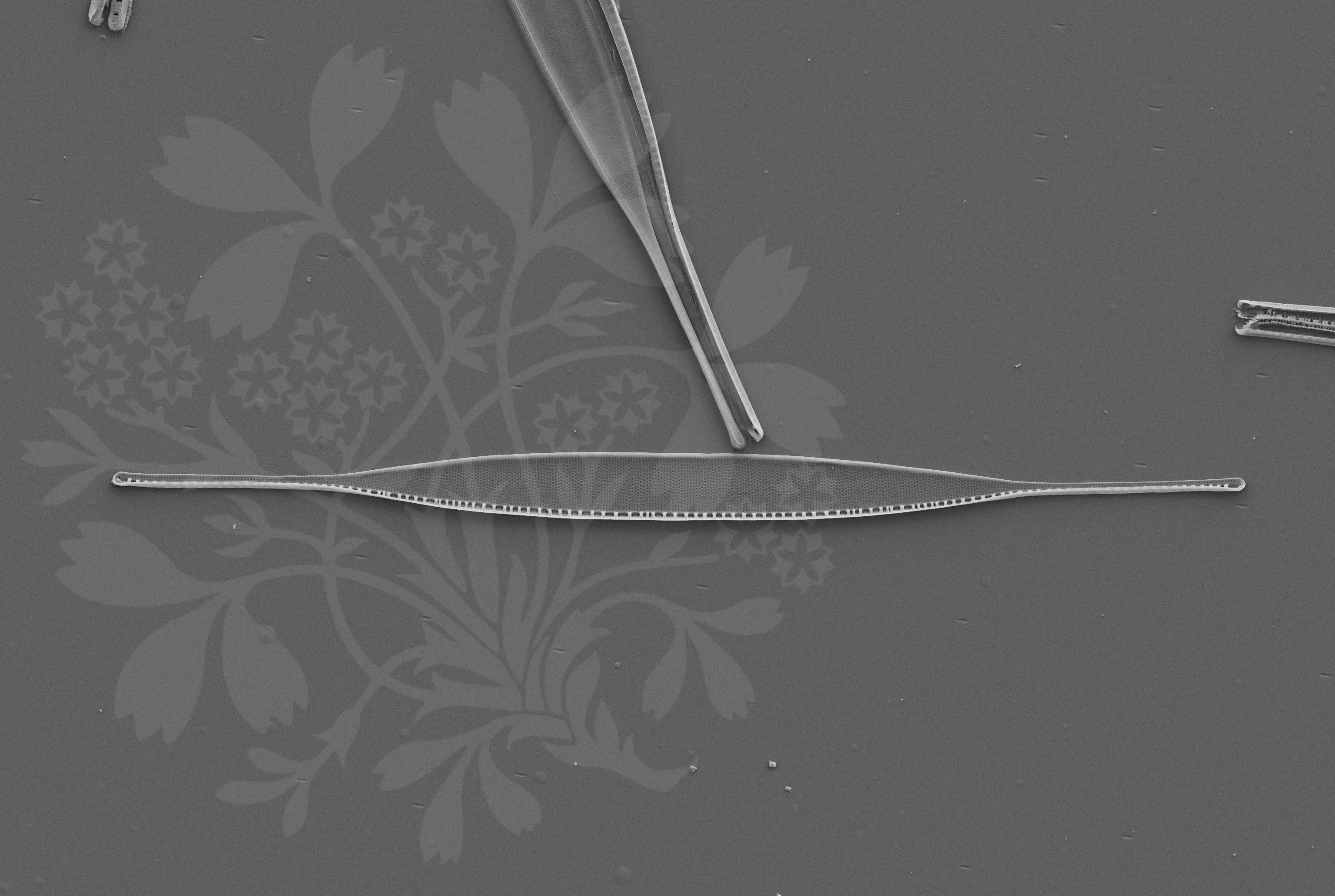
Signal A = SE2 Date :23 Jun 2015

WD = 4.7 mm

File Name = R20\_04.tif







2  $\mu$ m  
┌  
└

Mag = 3.50 K X

EHT = 5.00 kV

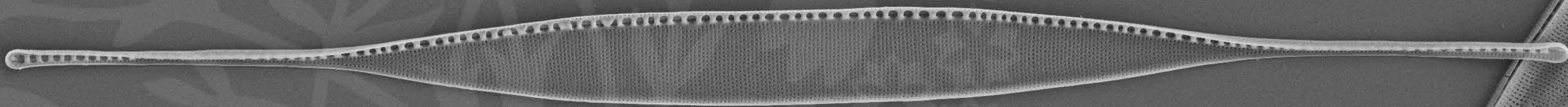
Signal A = SE2 Date :23 Jun 2015

WD = 4.7 mm

File Name = R20\_05.tif







2  $\mu$ m  
┆

Mag = 3.50 K X

EHT = 5.00 kV

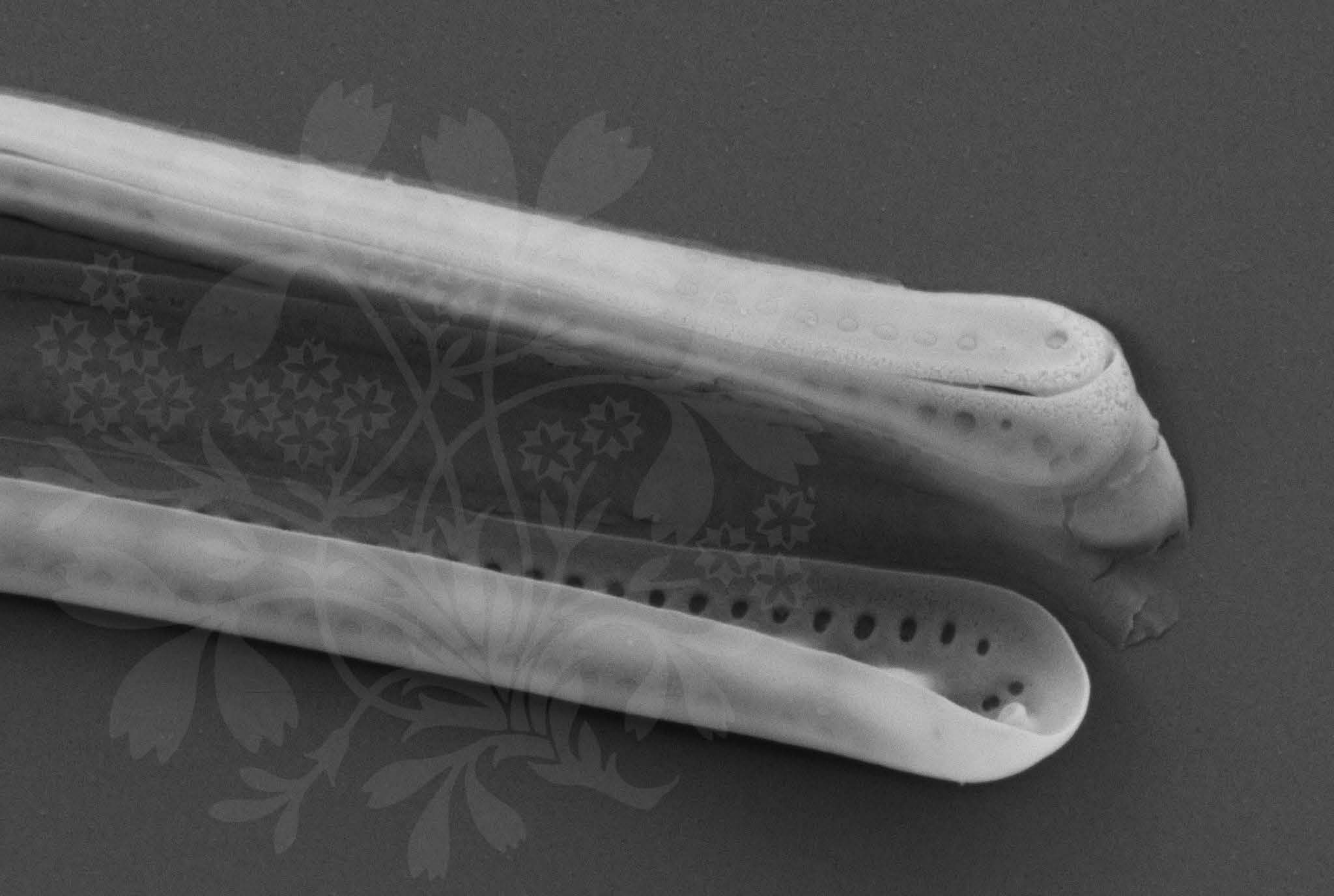
Signal A = SE2 Date :23 Jun 2015

WD = 4.7 mm

File Name = R20\_06.tif







100 nm

H

Mag = 50.00 K X

EHT = 5.00 kV

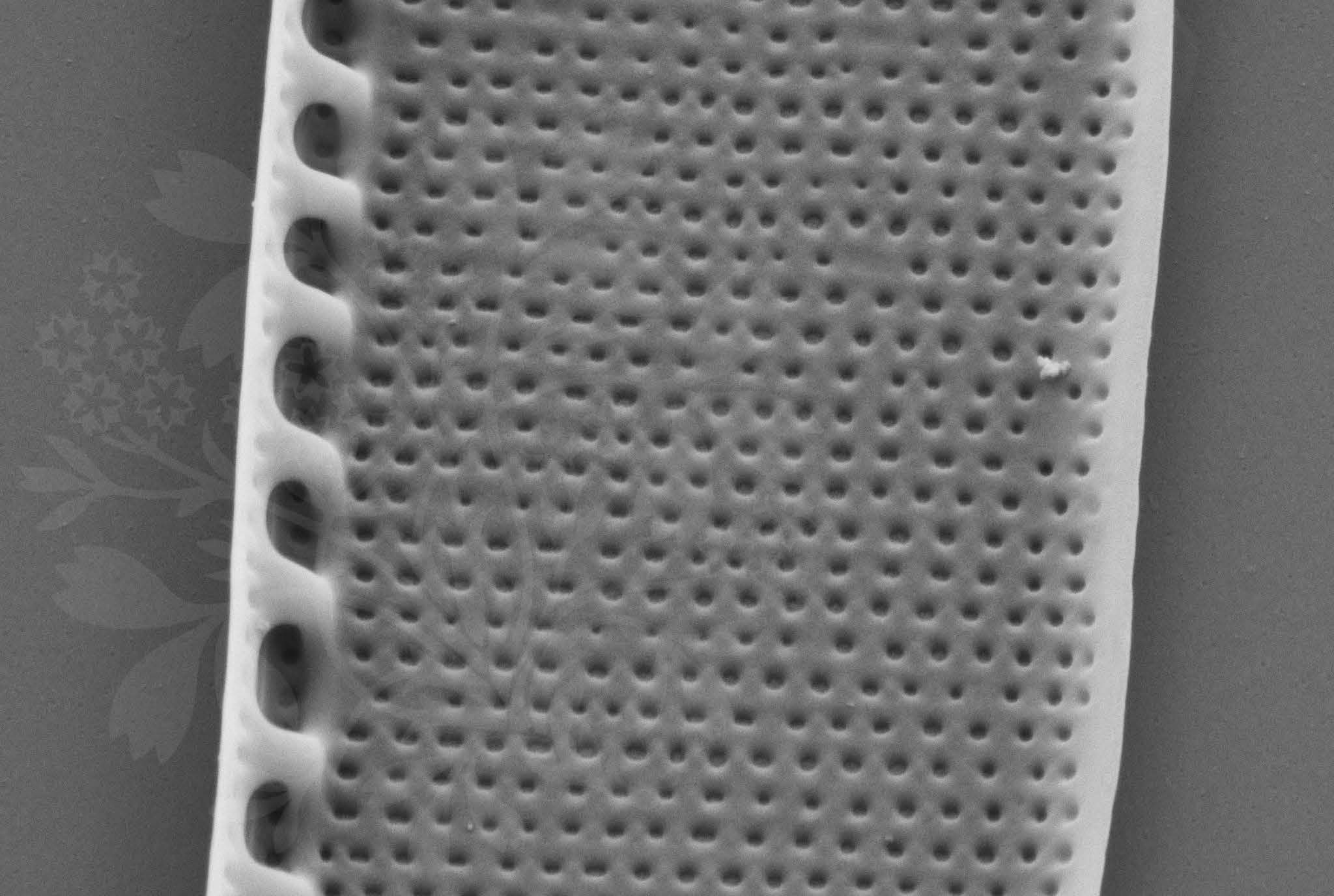
Signal A = SE2 Date :2 Jul 2015

WD = 4.5 mm

File Name = R20\_07.tif







100 nm  
H

Mag = 50.00 K X

EHT = 5.00 kV

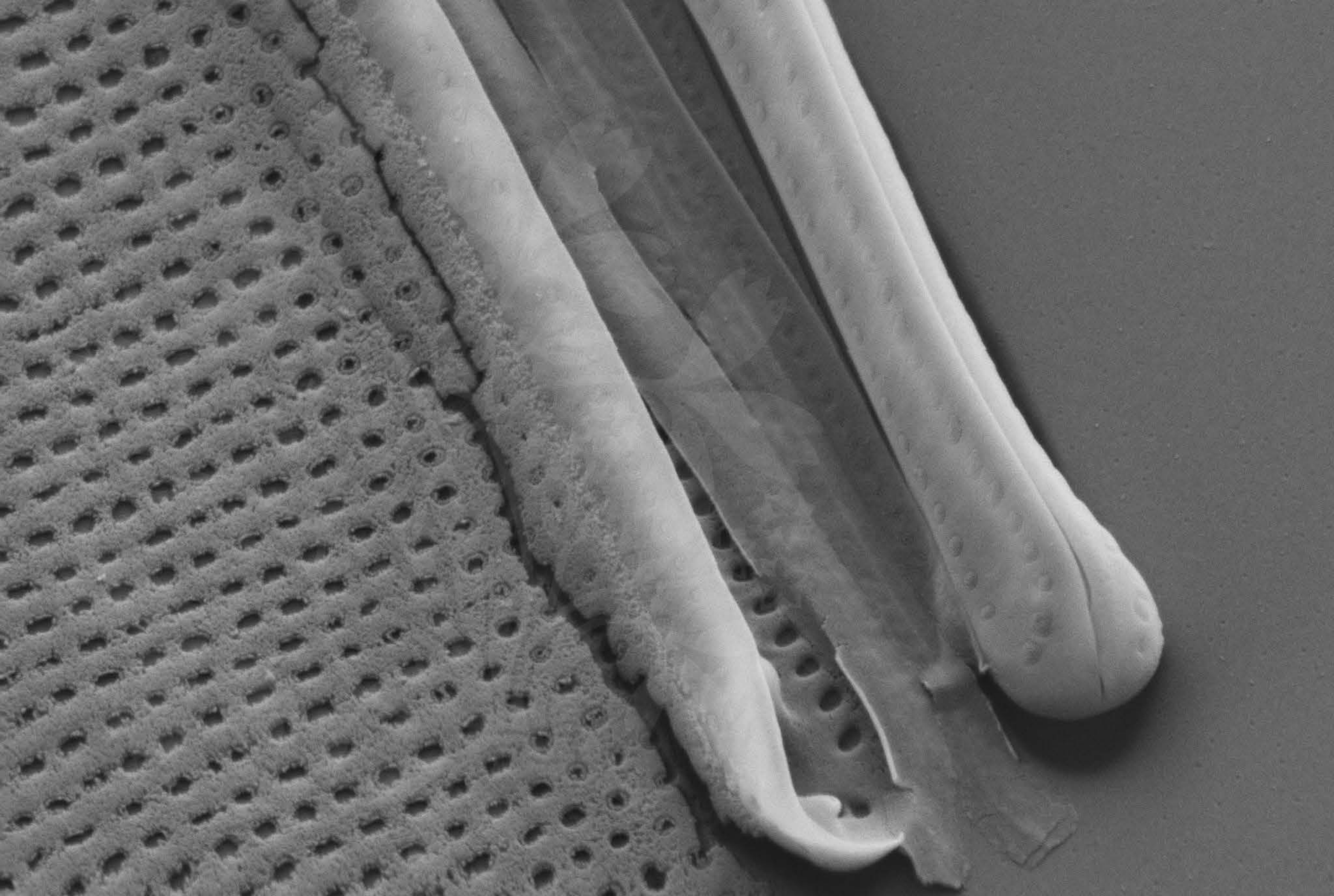
Signal A = SE2 Date :2 Jul 2015

WD = 4.5 mm

File Name = R20\_08.tif







100 nm

H

Mag = 50.00 K X

EHT = 5.00 kV

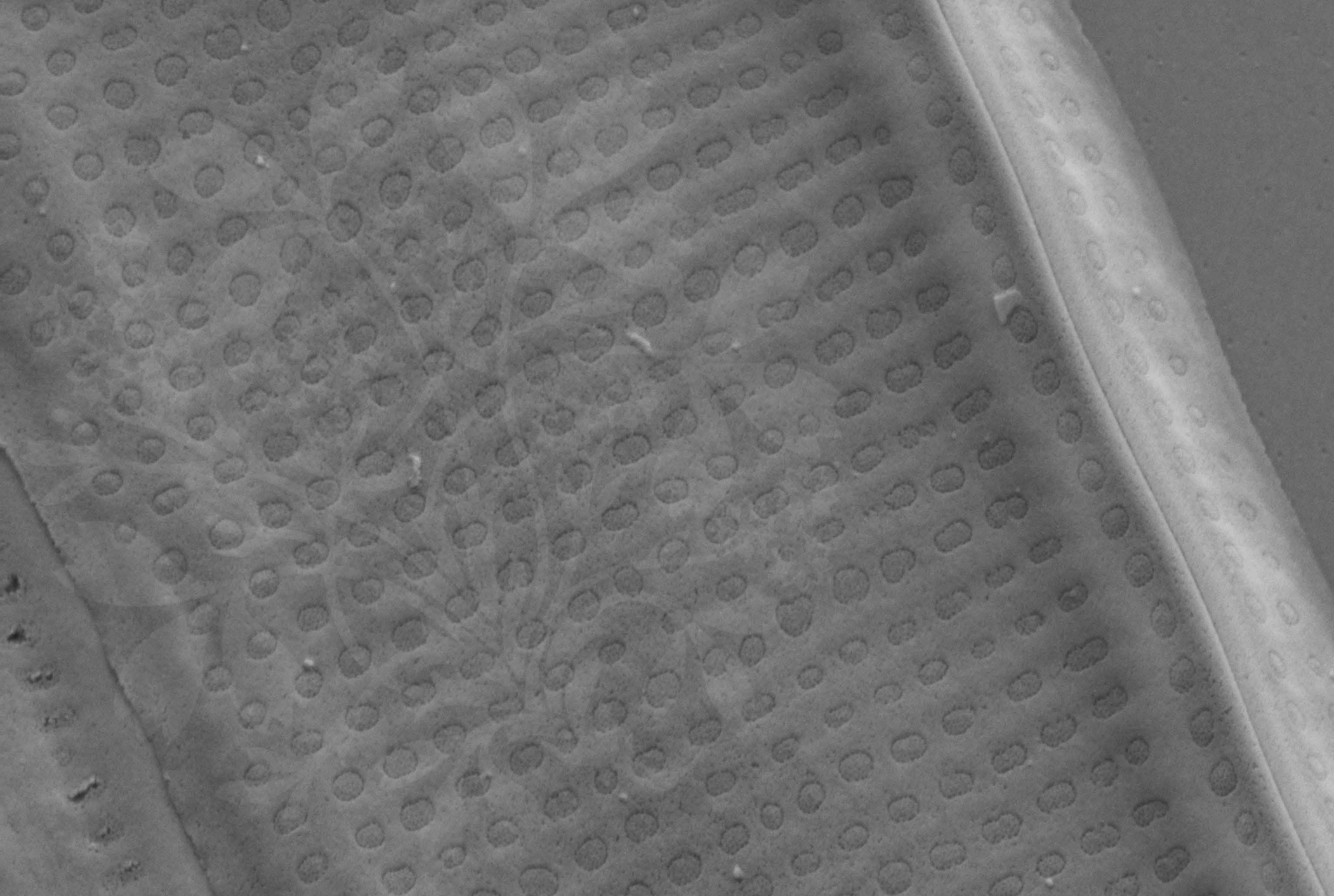
Signal A = SE2 Date :2 Jul 2015

WD = 4.5 mm

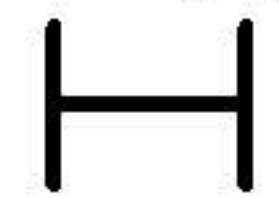
File Name = R20\_09.tif







100 nm



Mag = 60.00 K X

EHT = 5.00 kV

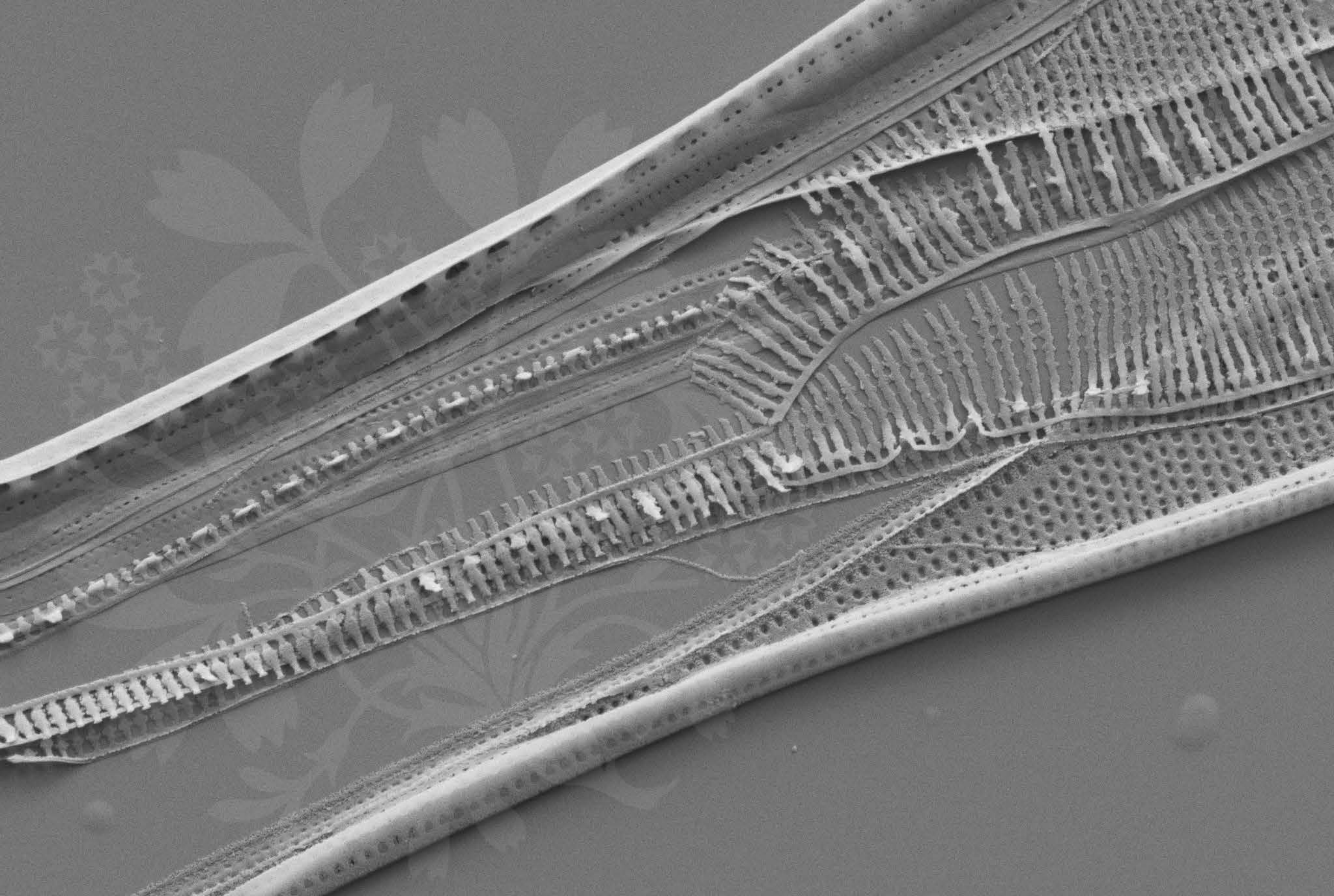
Signal A = SE2 Date :2 Jul 2015

WD = 4.5 mm

File Name = R20\_10.tif







1  $\mu\text{m}$



Mag = 20.00 K X

EHT = 5.00 kV

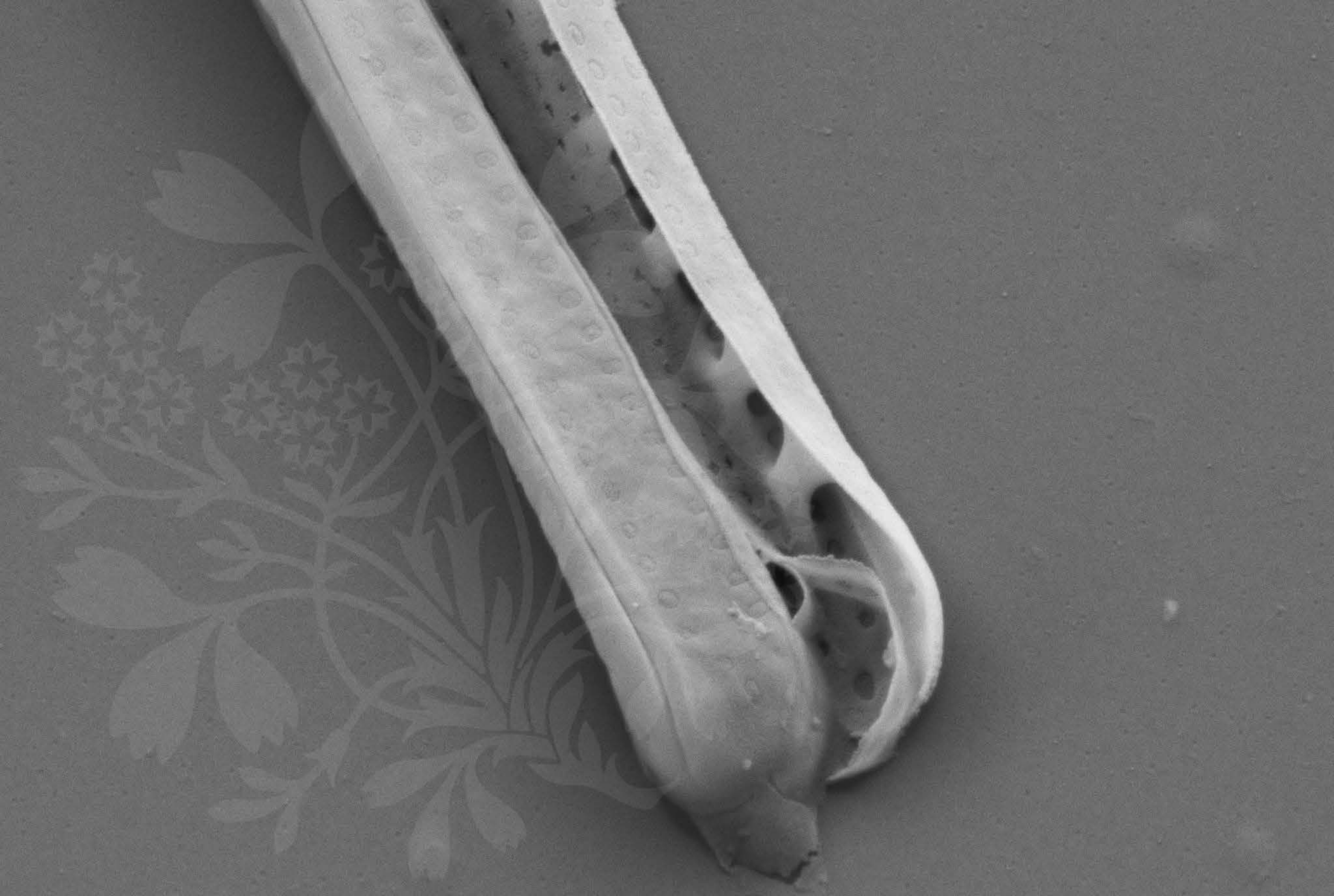
Signal A = SE2 Date :2 Jul 2015

WD = 4.5 mm

File Name = R20\_11.tif







100 nm

H

Mag = 50.00 K X

EHT = 5.00 kV

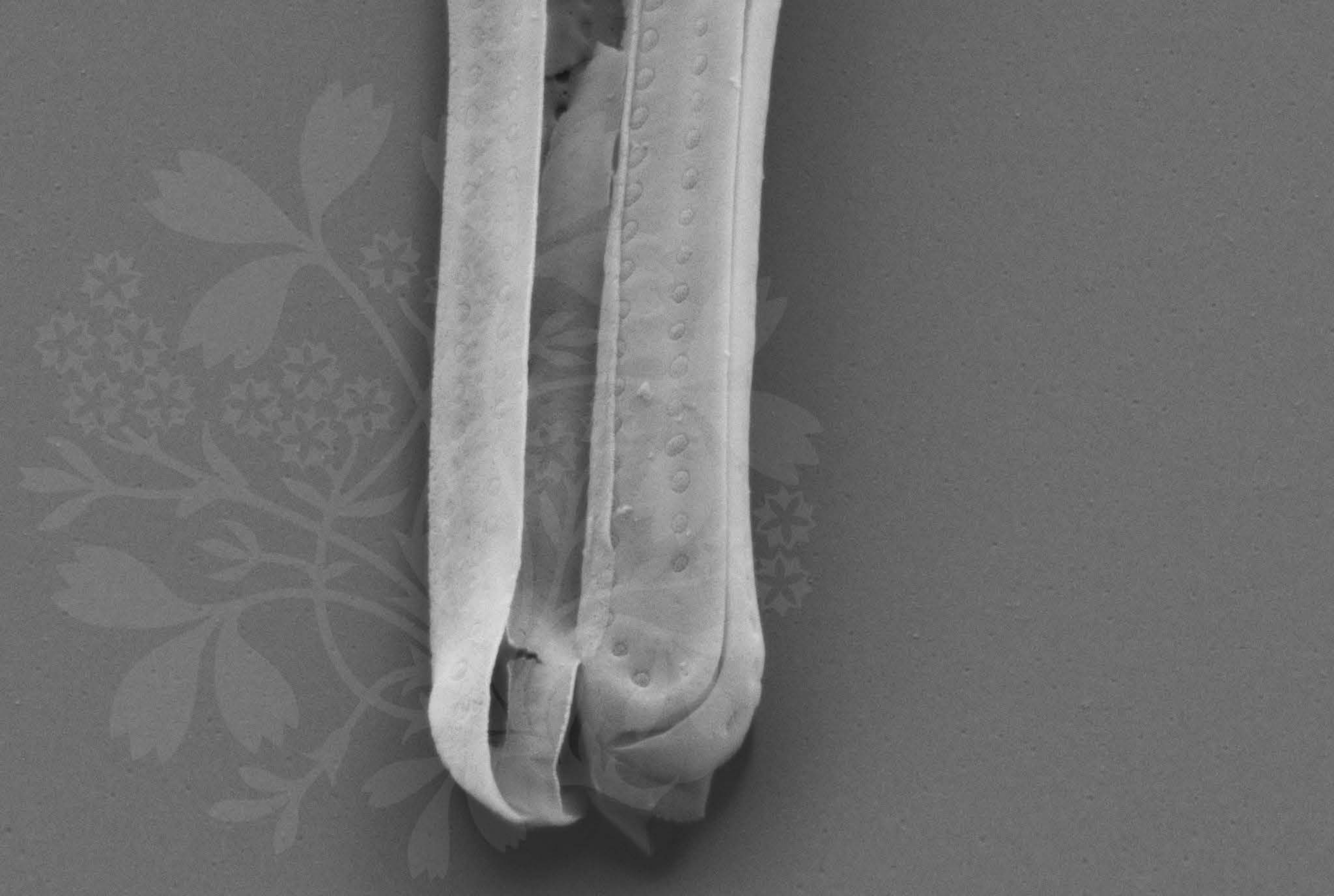
Signal A = SE2 Date :2 Jul 2015

WD = 4.5 mm

File Name = R20\_12.tif







100 nm



Mag = 50.00 K X

EHT = 5.00 kV

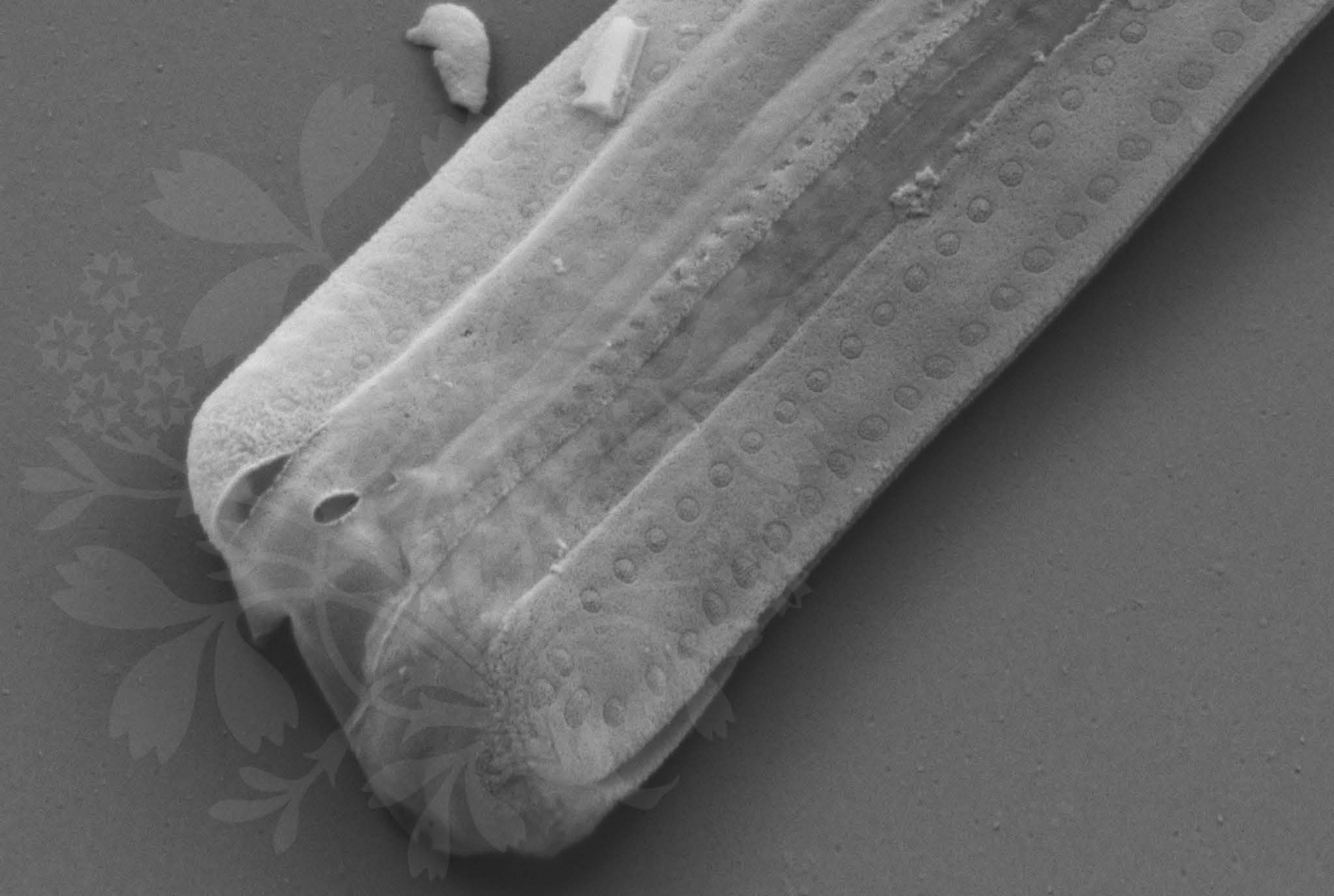
Signal A = SE2 Date :2 Jul 2015

WD = 4.5 mm

File Name = R20\_13.tif







100 nm



Mag = 60.00 K X

EHT = 5.00 kV

Signal A = SE2 Date :2 Jul 2015

WD = 4.5 mm

File Name = R20\_14.tif

